



# Slide Reference Guide

Specifications at a Glance/Cross Section Guide

Winter 2018

*Accuride*<sup>®</sup>  
Always Moving Forward

# Specification Table

	Model	Load Rating	Travel	Cross Section	Detent	Lock	Disconnect
Electronic Enclosures	2807	100 lbs. [45 kg]	2" over [50.8 mm]	.38" [9.6 mm]	—	Out	Latch
	2907	115 lbs. [52 kg]	2" over [50.8 mm]	.38" [9.6 mm]	—	Out	Lever
	2907WB	120 lbs. [55 kg]	2" over [50.8 mm]	.38" [9.6 mm]	—	Out	Lever
	3507	200 lbs. [91 kg]	2" over [50.8 mm]	.50" [12.7 mm]	—	Out	Latch
Light-Duty Slides	2002 Two Way	50 lbs [23 kg]	3/4	.38" [9.6 mm]	Center	—	—
	2601	75 lbs. [34 kg]	Full	.50" [12.7 mm]	Hold-in	—	—
	3732	100 lbs. [45 kg]	Full	.50" [12.7 mm]	Hold-in	—	Push Latch
	3832E series	100 lbs. [45 kg]	Full	.50" [12.7 mm]	Hold-in	—	Lever
	0363 Two Way	100 lbs. [45 kg]	Full	.85" [21.6 mm]	Center	—	—
	201	108 lbs. [49 kg]	3/4	.38" [9.6 mm]	Hold-in	—	—
Medium-Duty Slides	204A-LR	140 lbs. [64 kg]	3/4	.38" [9.6 mm]	—	Out	Latch
	305A-LR	140 lbs. [64 kg]	Over	.75" [19.1 mm]	—	Out	Latch
	3301	150 lbs. [68 kg]	Over	.50" [12.7 mm]	—	—	—
	3307	150 lbs. [68 kg]	Over	.50" [12.7 mm]	—	Out	Latch
	3357	150 lbs. [68 kg]	Over	.50" [12.7 mm]	—	—	Latch
	3308	150 lbs. [68 kg]	Over	.50" [12.7 mm]	—	In and Out	Lever
	3634EC	150 lbs. [68 kg]	Over	.78" [19.8 mm]	Hold-in	—	Lever
	301-2590	155 lbs. [70 kg]	Over	.75" [19.1 mm]	Hold-in	—	—
Heavy-Duty Slides	301	175 lbs. [80 kg]	Over	.75" [19.1 mm]	—	—	—
	3601	225 lbs. [116 kg]	Over	.75" [19.1 mm]	Hold-in	—	—
	3600	273 lbs. [124 kg]	Full	.75" [19.1 mm]	Hold-in	—	—
	3607	273 lbs. [124 kg]	Full	.75" [19.1 mm]	—	Out	Lever
	3641	180 lbs. [82 kg]	Over	.89" [22.6 mm]	Hold-in	—	Rail
	3642	180 lbs. [82 kg]	Over	.89" [22.6 mm]	Hold-in	—	Rail
	3657	273 lbs. [124 kg]	Full	.75" [19.1 mm]	Hold-in	—	Lever
	7950	350 lbs. [159 kg]	Full	.75" [19.1 mm]	Hold-in	—	—
	7957	350 lbs. [159 kg]	Full	.75" [19.1 mm]	Hold-in	—	Lever
	9301E	600 lbs. [272 kg]	Full	.75" [19.1 mm]	Hold-in	—	—
	9307E	600 lbs. [272 kg]	Full	.75" [19.1 mm]	—	Out	—
	9308E	600 lbs. [272 kg]	Full	.75" [19.1 mm]	—	In and Out	—
	AL4120	1,212 lbs. [550 kg]	3/4	1.42" [36 mm]	—	—	—
	AL4140	1,323 lbs. [600 kg]	Full	1.50" [38 mm]	—	—	—
Specialty Series Slides	FG115	900 lbs. [4000N]	Linear	.94 [24 mm]	—	—	—
	CB-Hand	Slide Dependent	—	—	—	In and Out	—
	AL4190 Tilt-Track System	—	—	—	—	—	—
	115RC	265 lbs. [120 kg]	Linear	.48" [12.3 mm]	—	—	—
	116RC	793 lbs. [360 kg]	Linear	.98" [25 mm]	—	—	—
	CBLift-0019 Ascent	14.5 lbs. [6.6 kg]	21" [538 mm]	—	—	—	—
	115	Mounting Dependent	Linear	.43" [11.1 mm]	—	—	—
	SS2028	100 lbs. [45 kg]	3/4	.38" [9.6 mm]	Hold-in	—	—
	SS0330	143 lbs. [65 kg]	Full	.75" [19.1 mm]	Hold-in	—	—
Pocket & Bayonet	SS5321	352 lbs. [160 kg]	Over	.75" [19.1 mm]	Hold-in	—	—
	2120	75 lbs. [34 kg]	3/4	.50" [12.7 mm]	Hold-in	—	Lever
	3820E	100 lbs. [45 kg]	Full	.50" [12.7 mm]	Hold-in	—	Lever
	3320	120 lbs. [55 kg]	Full	.50" [12.7 mm]	Hold-in	—	—
	3620	200 lbs. [91 kg]	Over	.75" [19.1 mm]	Hold-in	—	—
	9328E	360 lbs. [163 kg]	Full	.75" [19.1 mm]	—	In and Out	—
	9322E	360 lbs. [163 kg]	Full	.75" [19.1 mm]	—	—	—

## To the design engineer:

This catalog is designed to assist you in making the proper slide selection for your application. The information listed on this spread provides an overview of the slides available and pertinent information to consider when selecting a slide. The following pages provide a more detailed look at slides and mounting hardware. Additional information, technical sheets, and specific design criteria is available at [www.accuride.com](http://www.accuride.com).

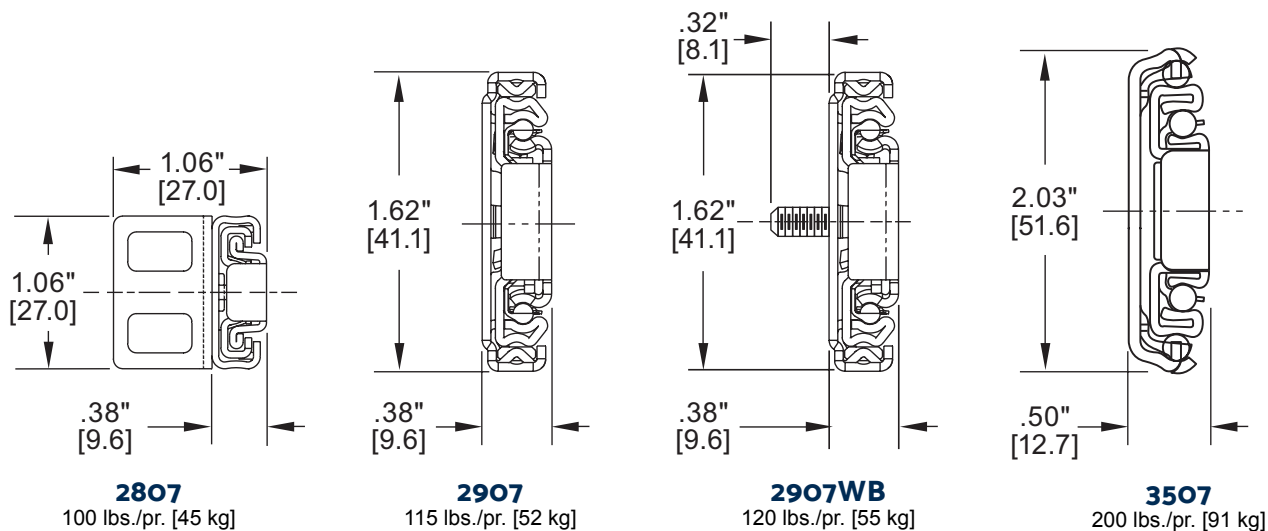
### Factors to consider when selecting a slide

- Weight of chassis /drawer
- Side space available between chassis /drawer and rack/cabinet
- Height, width, and depth of chassis /drawer
- Depth of rack/cabinet
- Travel desired
- Application-specific requirements
- Disconnect of chassis /drawer needed
- Locks needed
- Mounting holes needed
- Optional mounting hardware for mounting in rack or enclosure

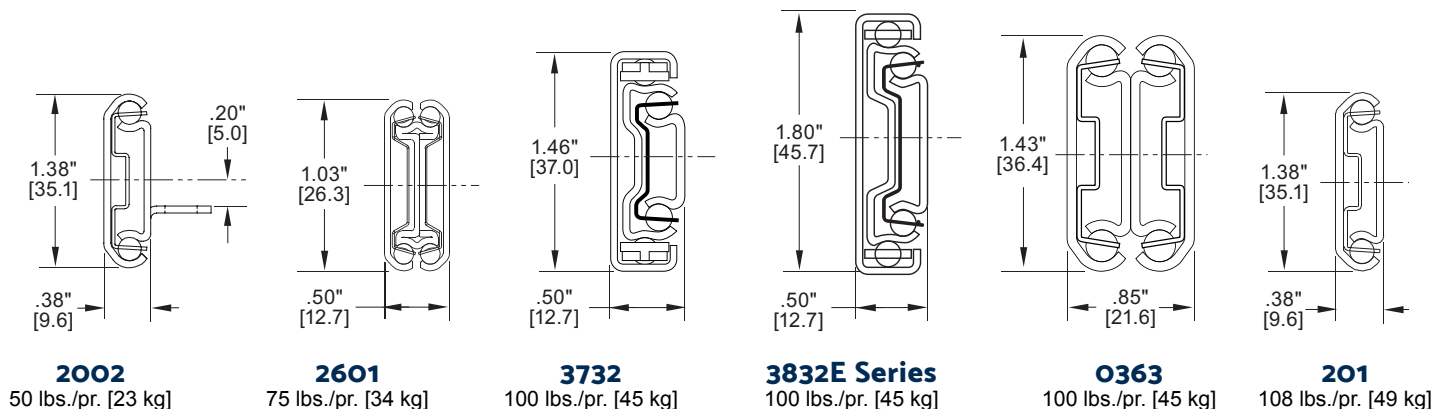
### Cross sections and load ratings

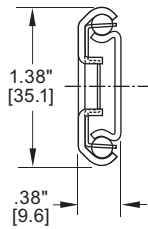
Load rating range is based on slide length. For more information, see the slide tables in this catalog or download the technical sheets from [accuride.com](http://accuride.com).

#### Electronic Enclosures

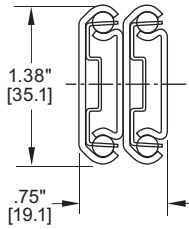


#### Light-Duty

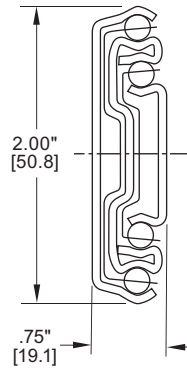




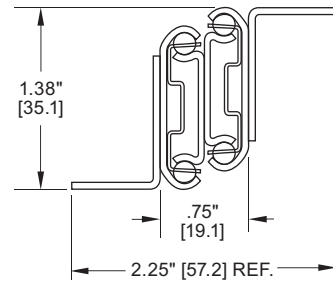
**204A-LR**  
140 lbs./pr. [64 kg]



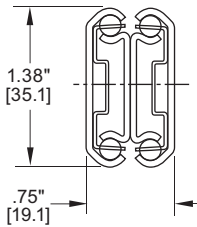
**305A-LR**  
140 lbs./pr. [64 kg]



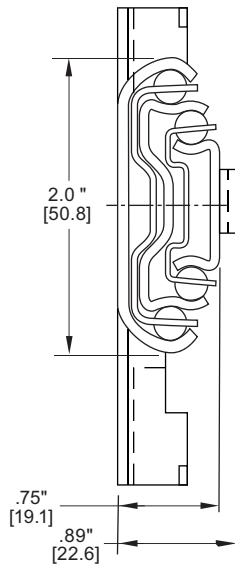
**3301/3307/3308/3357**  
150 lbs./pr. [68 kg]



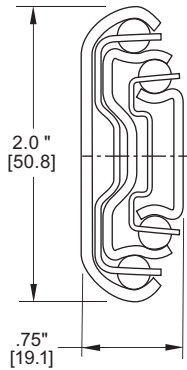
**301-2590**  
155 lbs./pr. [70 kg]



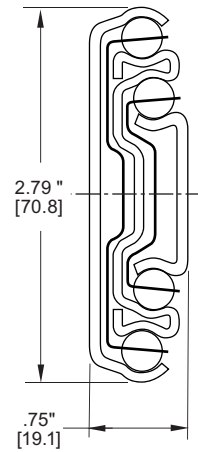
**301**  
175 lbs./pr. [80 kg]



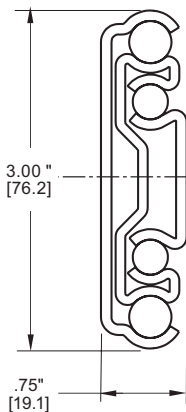
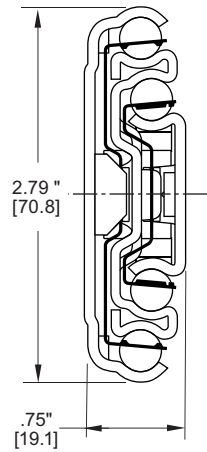
**3641/3642**  
180 lbs./pr. [82 kg]



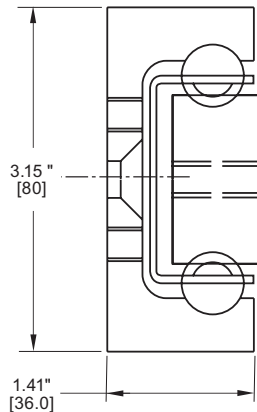
**3601**  
255 lbs./pr. [116 kg]  
**3600/3607/3657**  
273 lbs./pr. [124 kg]



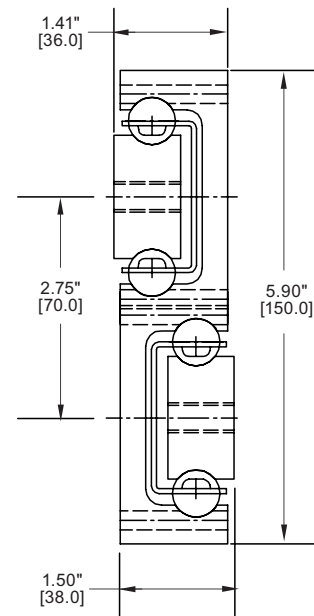
**7950/7957**  
350 lbs./pr. [159 kg]



**9301E/9307E/9308E**  
Up to 500 lbs./pr. [227 kg]\*  
\* depending on usage

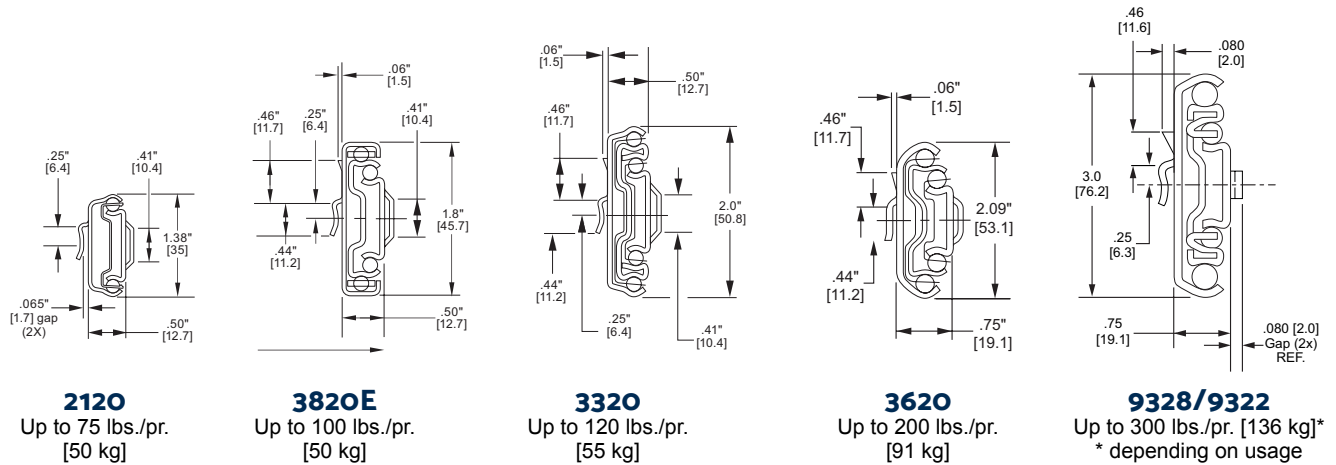


**AL4120**  
Up to 1,212 lbs./pr. [550 kg]

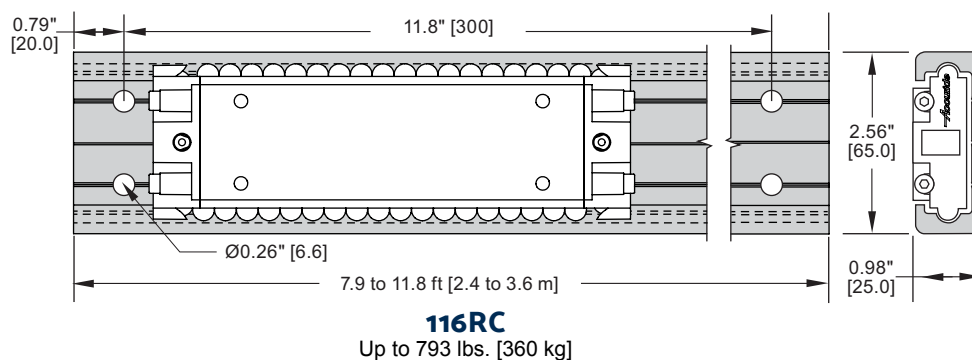
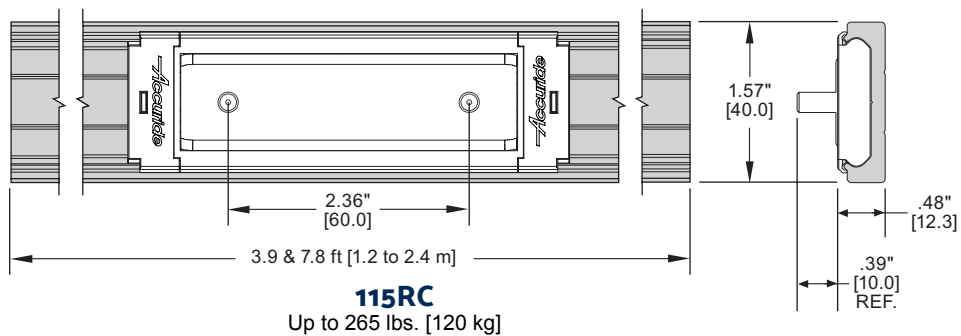
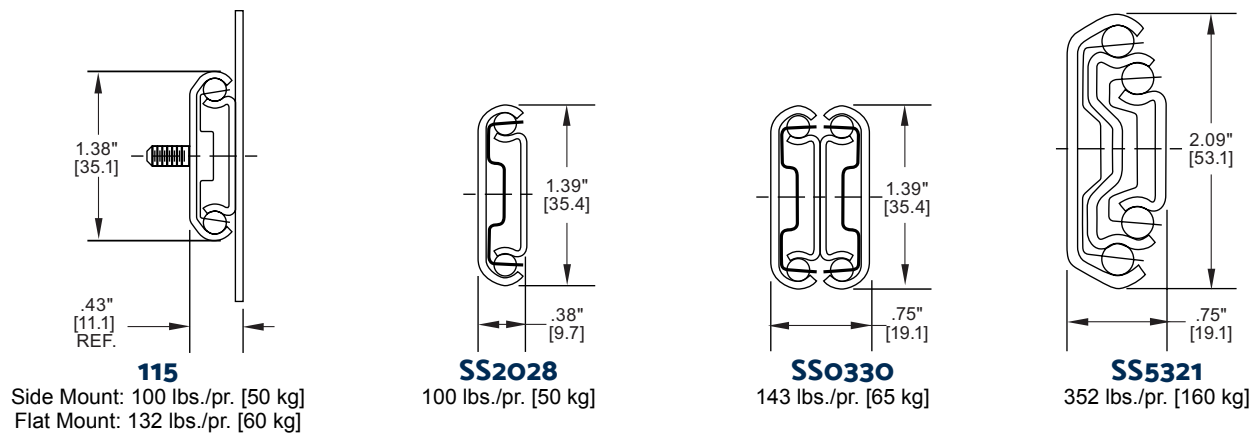


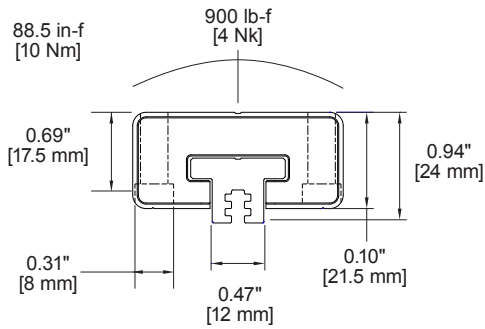
**AL4140**  
Up to 1,323 lbs./pr. [600 kg]

## Pocket &amp; Bayonet



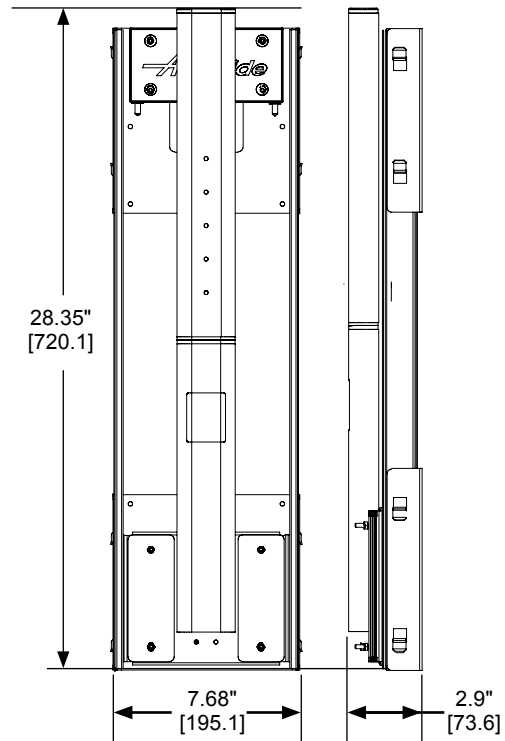
## Specialty Slide Products





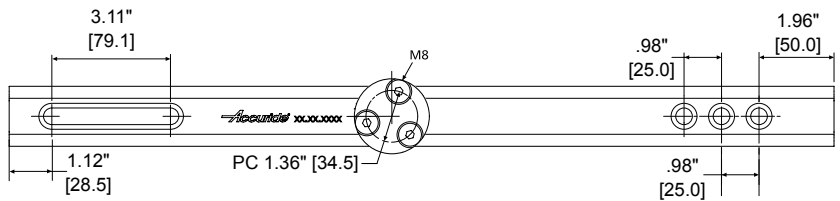
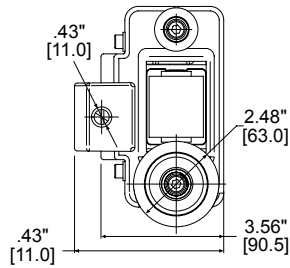
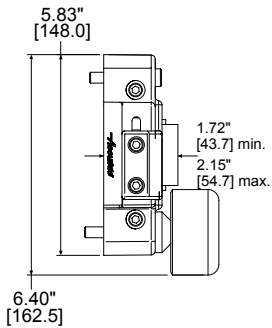
**FG115**

Side Mount: 900 lb-f [4000 N]



**Ascent CBLift-0019**

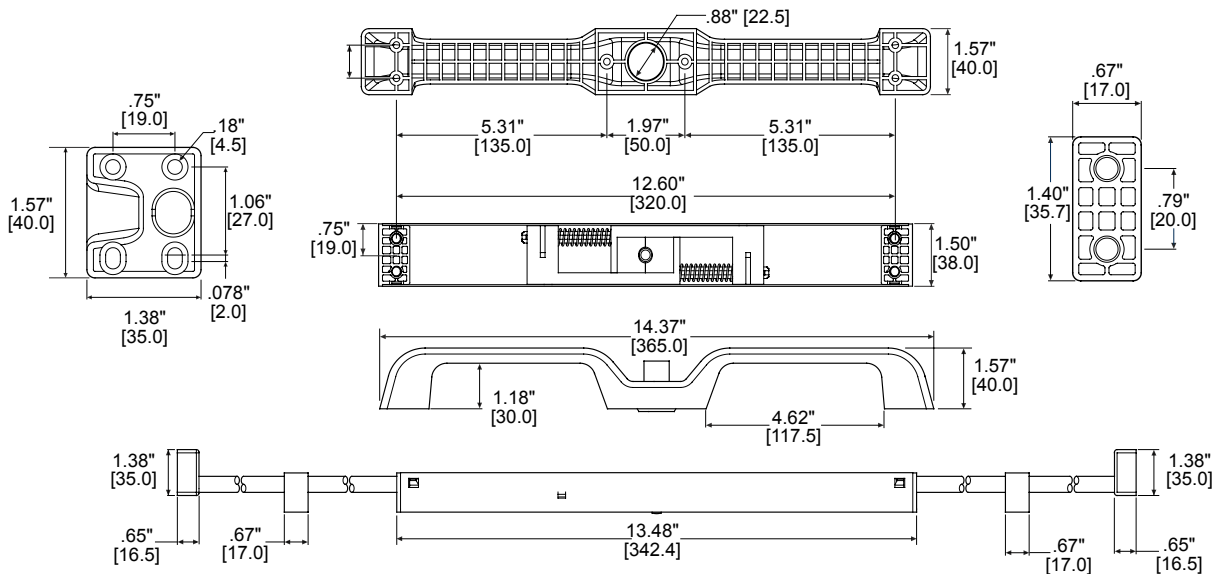
Up to 14.5 lbs. [6.6 kg]



**AL4190**

**Tilt Track System**

Drawers up to 40\" wide [1016 mm]



**CB-Hand Locking Handle Kits**

Drawers up to 60\" wide [1524 mm]